



***SLOG SQUARE ELECTROMECH PVT. LTD.***

**AN ISO- 9001:2015 CERTIFIED COMPANY**

<https://www.slogsquare.com/>





# TABLE OF CONTENT

- Company Statement
- Key Activities
- Our Team
- Companies Milestone
- Business Share
- Global Presence
- Engineering Competencies
- Execution
- Value Creation
- Glance of Projects
- Future Plans





# AGENDA

Agenda of today's discussion will be regarding brief introduction about SLOG Square Electromech Pvt. Ltd.



## **Our Philosophy**

Embracing change and innovation

## **Our Mission**

Our main focus is to provide high productivity machines with Zero Breakdown, zero defects and zero accidents.

## **Our Vision**

To become trusted brand in the field of machine manufacturing by delighting our domestic and global customers.

## **Our Goal**

To supply intelligent machines, inculcating latest technologies and work smartly for industrial revolution 4.0

## Key Activities

Design and  
Development of  
bespoke machines



## Workplace

Plot No. 171, Sector 9,  
IMT Bawal - 123501,  
Rewari, Haryana

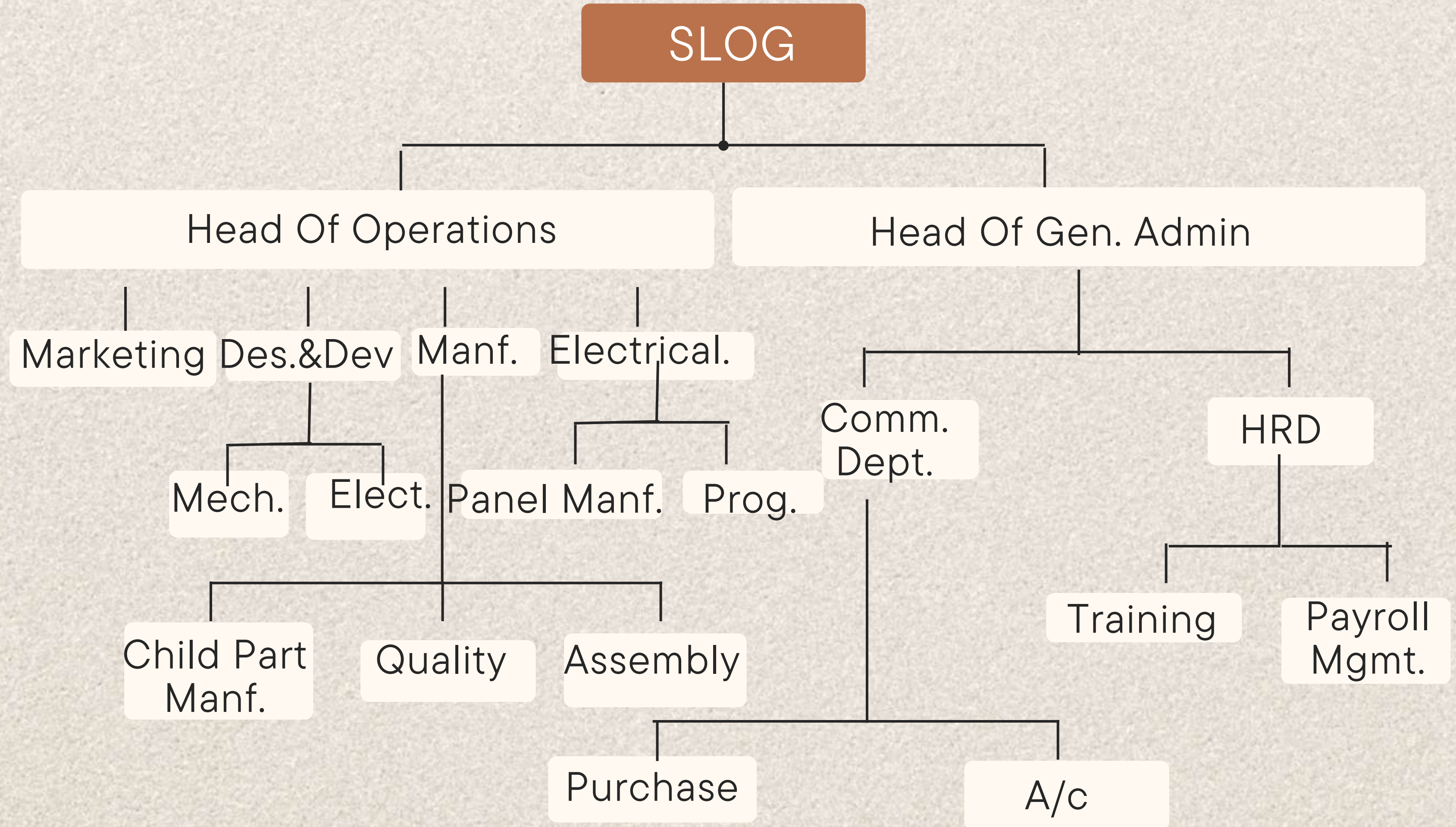


# Our Team





# Organization Chart



# COMPANY'S MILESTONES



## Key Development

Replaced Imported machine with competent in-house design in 2010 for our customer

## Events

Our first export was in 2017.



## Commencement

SLOG was started in 2006 in 250 sq m area

## Expansion

Moved to 525 sq. m in 2012

## Expansion

We have moved to 1012 sq m plant in 2018 and changed the constitution as Pvt. Ltd. company

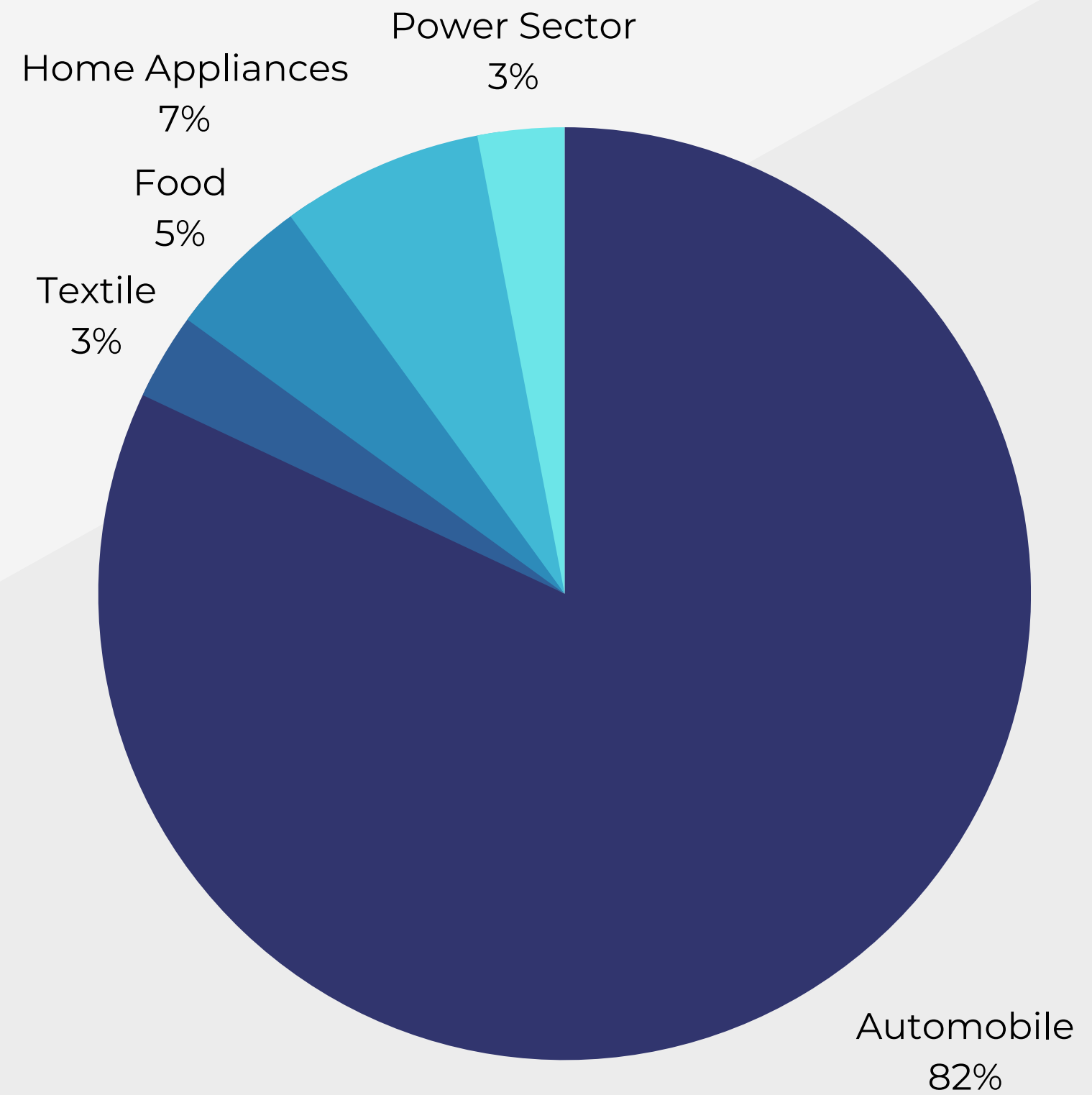


# AWARDS AND ACHIEVEMENTS





# ***OUR BUSINESS SHARE IN VARIOUS SECTORS***







## ***GLOBAL PRESENCE AND DELIVERIES***

- We are exporting machines and machine parts to Rancon Auto Industries Limited, Bangladesh
- A new lead is received from DHS Motor Bikes, Bangladesh through the recommendation of Rancon Auto Industries, which is at pre-mature stage.
- We have started exporting machines of assembly lines for a new project of M/s Global Automobiles Pvt. Ltd., Nepal (Suzuki 2-wheeler factory)
- In the month of December'22, we have signed NDA with a European company for supply of machines for their plants located globally.



# ***ENGINEERING COMPETENCIES***

## ***MECHANICAL DESIGN & DEVELOPMENT***

- Our success lies in it's strong in-house R&D, backed by experienced along with our young and capable work force.
- Our team has the right blend of experience and fresh minds.





○ ○ ○ ○

# ***ELECTRICAL PANEL DESIGN AND PROGRAMMING***

- We have electric professionals with sound knowledge about automation and latest technology.
- Also, We have in-house facility for making PLC based control panels and programming.
- Working for Industrial revolution 4.0

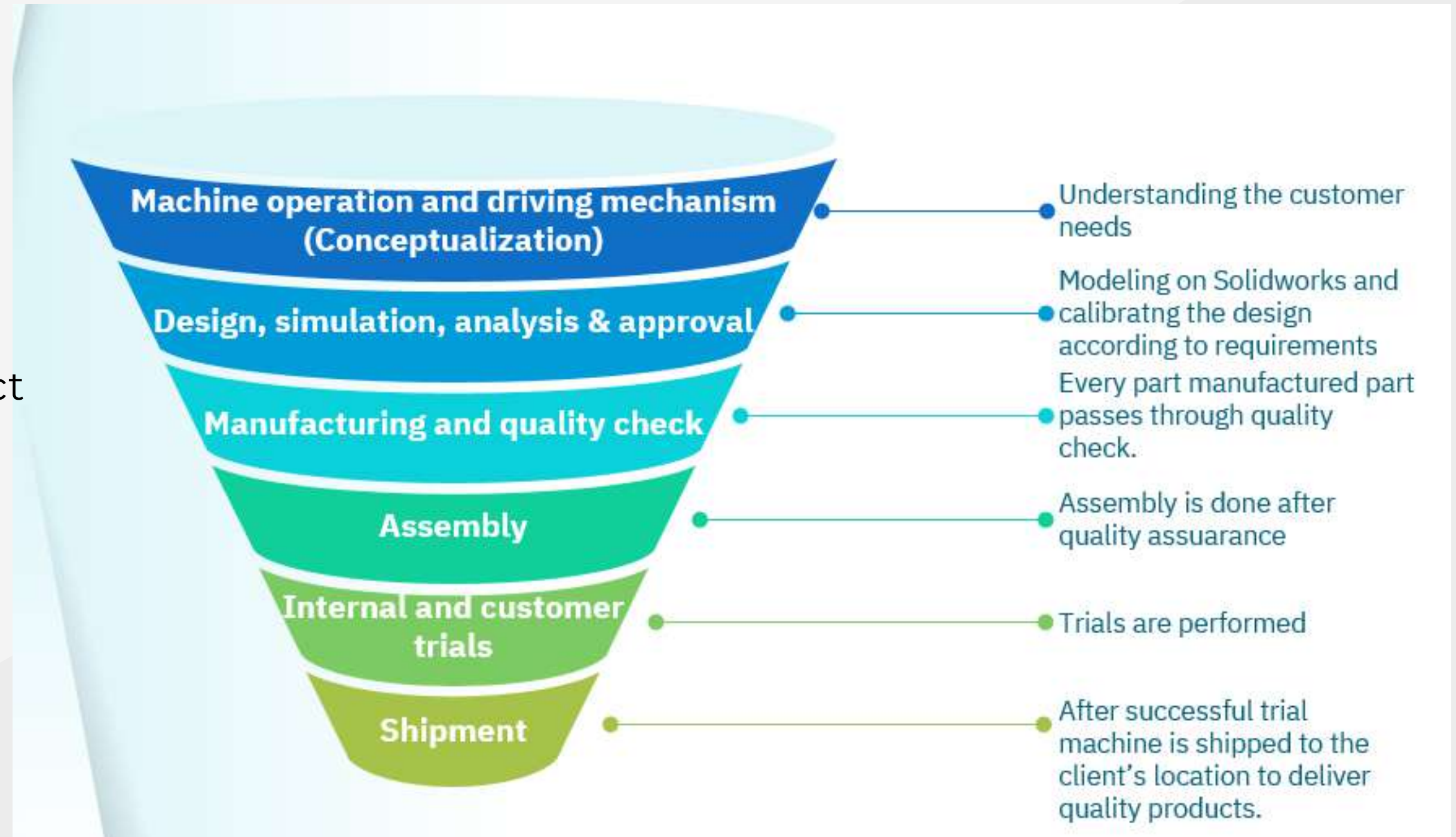
○ ○ ○ ○





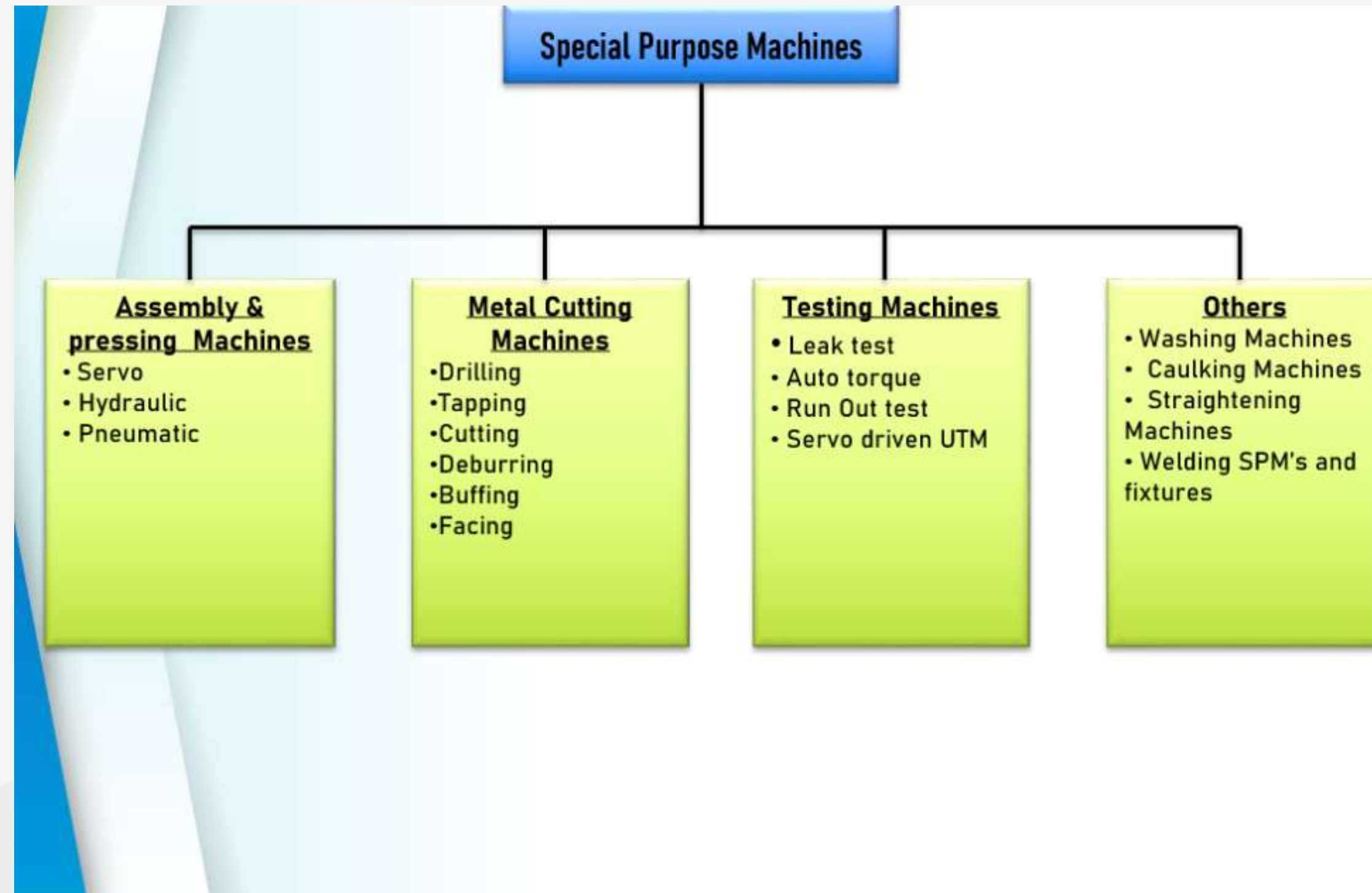
# ***EXECUTION***

Procedure followed for every project





# VALUE CREATION



# Manufacturing Area





# Assembly Area





## ***MODULAR ASSEMBLY (BOLT TIGHTENING)***



## **NUT TORQUING MACHINE**





# GLANCE OF PROJECTS



Engine Valve Straightening M/c  
Shri Ram Pistons and Ring LTD.



## GLANCE OF PROJECTS



**WASHING M/C  
HITACHI ASTEMO**



**SLIM TRIM  
SOMIC ZF**



**CLIP FITTING  
SOMIC ZF**



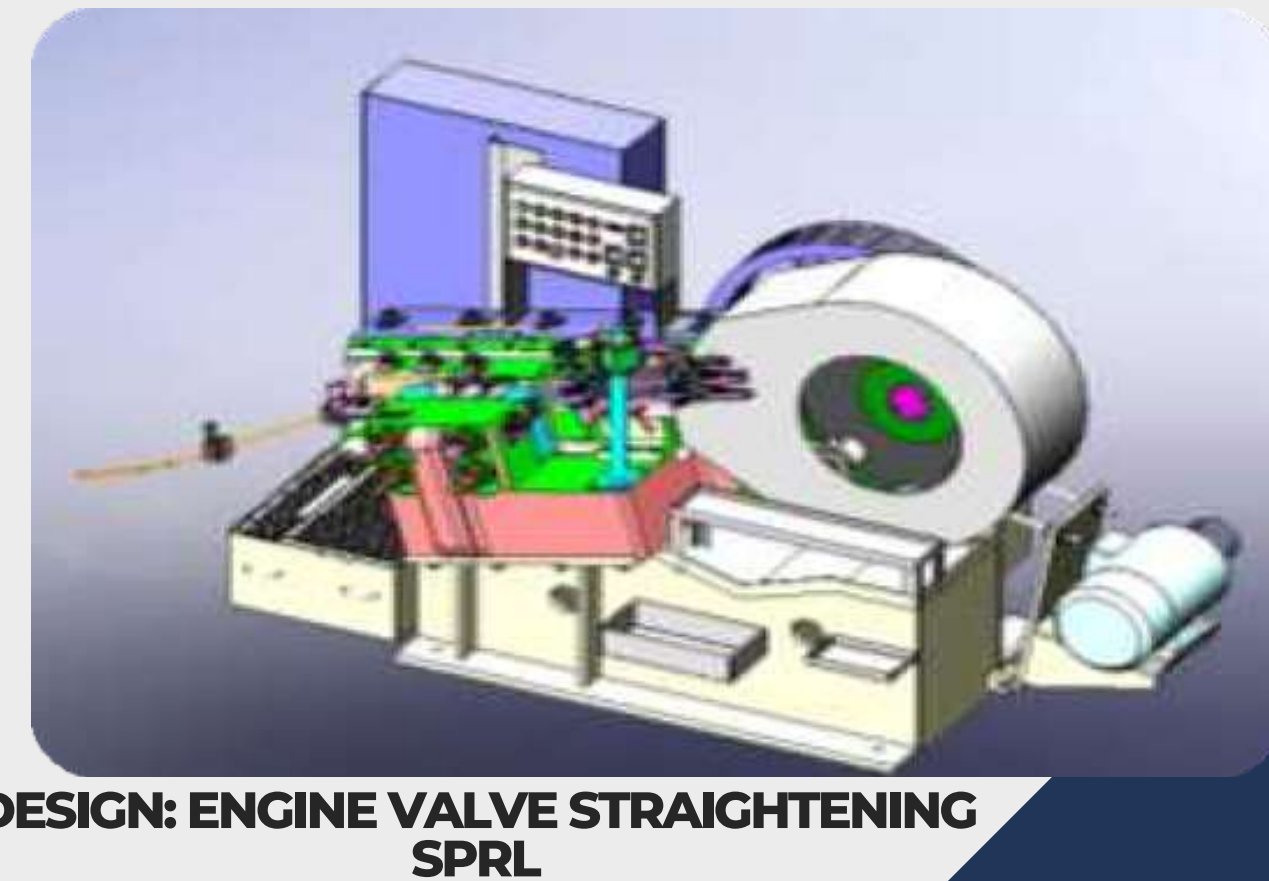
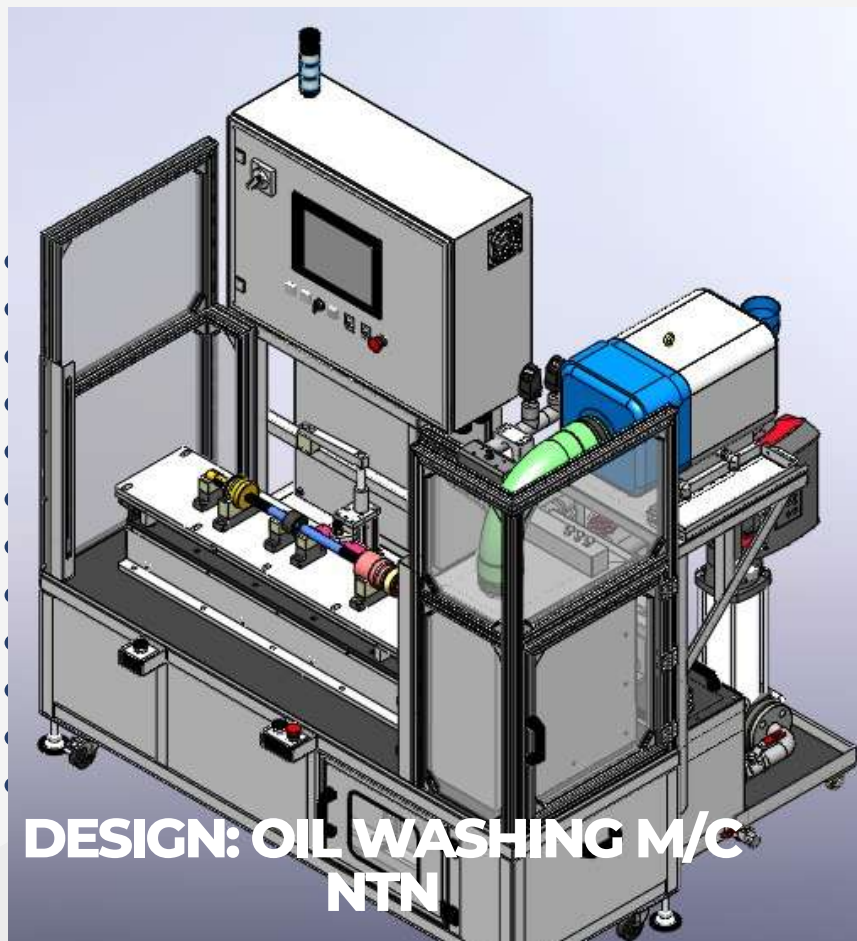
**WASHING M/C  
NTN**



**ROLL FITTING  
SOMIC ZF**



# GLANCE OF PROJECTS

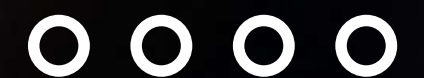






# ***FUTURE PLANS***

- Setting up more VMC and CNC machines for faster and accurate child parts manufacturing.
- Enhancing our reach in global markets.
- Focus on increasing our portfolio.





# Our Valuable Customers

**JTEKT**



**SONA MANDHIRA PVT. LTD.**<sup>TM</sup>  
INTEGRITY SAFETY QUALITY



**Autoliv**



Asahi India Glass Ltd.



**MITSUMI  
KINZOKU**

**VEEBA**<sup>TM</sup>



**TOKAI RUBBER INDUSTRIES, LTD.**

# Our Valuable Customers

 Hitachi Astemo, Ltd.

 SHRIRAM  
PISTONS & RINGS LTD.

 **SUZUKI**

**RANCON**  
MOTORBIKES

**Panasonic**

 **TENNECO**

**ROOP**

**NGK**  
SPARK PLUGS

 **EXIDE**  
INDUSTRIES LIMITED

  
**varroc**  
EXCELLENCE

**SOMIC ZF**  
SOMIC ZF Components Ltd.

**MAGNETI  
MARELLI**

 **AETOM ENGINEERING  
TECHNOLOGIES PVT. LTD.**

 **Helical  
Springs**

 **BEST KOKI**  
AUTOMOTIVE (P) LTD.

**YKK**





**THANK YOU FOR YOUR PRECIOUS TIME**

*We look forward to working  
with you*

## **OFFICE**



Plot No. 171, Sector 9, IMT  
Bawal - 123501, Rewari,  
Haryana



+91- 9315868644



[www.slogsquare.in](http://www.slogsquare.in)

